

MAYVILLE AREA AMBULANCE



2019 OPERATIONAL REPORT



SERVING OUR COMMUNITY SINCE 1976

5802 Lynch Drive
P.O. Box 181
Mayville, Michigan 48744

Business: (989) 843-6136
Emergency: 911
admin@mayvilleambulance.org

www.mayvilleambulance.org

OUR SERVICE



Mayville Area Ambulance Service (MAAS) is a 501(c)3 Non-Profit Corporation, registered in the State of Michigan, to provide ambulance and emergency medical services to the residents of Mayville and the surrounding areas. We provided both emergency and non-emergency services and transportation.

MAAS is licensed by the State of Michigan Department of Community Health as a Life Support Agency (LSA), at the Basic Life Support (BLS) level. MAAS is a member agency of both the Saginaw Tuscola Medical Control Authority and the Lapeer County Medical Control Authority, which provide medical oversight and direction to MAAS and the other ambulance and rescue agencies in their respective areas.

OUR BOARD



The MAAS Board of Directors is comprised of a representative from each municipality that is contracted with MAAS. The Board meets bi-monthly to guide the operations and growth of the service. The MAAS Board members are:

Ronald Gromak, Board Chairman

*Representing Rich Township
Board Member Since 1999*

Glenn Fox, Board Vice-Chairman

*Representing Dayton Township
Board Member Since 2000*

Sherry Bodeis, Director

*Representing Fremont Township
Board Member Since 2006*

Jan Wickham, Director

*Representing the Village of Mayville
Board Member Since 2013*

OUR STAFF



The staff of MAAS is comprised of 21 Emergency Medical Technicians (EMTs), 1 Advanced Emergency Medical Technician (AEMT), 1 Paramedics and 4 Medical First Responders (MFRs). All of these are volunteers, whom receive a stipend for the time they server while on duty and responding to service requests. Each has completed a State approved training course, passed the licensing exam, obtained a CPR card, and completed an emergency driving course. As well, many have participated in specialized training courses, such as Prehospital Trauma Life Support (PHTLS), Pediatric Education for Prehospital Providers (PEPP), National Incident Management Systems (NIMS), Basic Disaster Life Support (BDLS) and more. Several have other public safety roles such as firefighters, dispatchers, and CPR instructors. In addition to the initial requirements to become an EMS provider, each of our medical personnel are required to attend on-going continuing education to maintain their state license.

To ensure that day to day operations are lead successfully, the Board of Directors annually appoints officers for MAAS. These officers provide operational guidance for the staff, as well as recommendations to the Board. The MAAS Officers are:

James Welke, Executive Director

*Officer Since 1984
MAAS Member Since 1977*

**Joel Welke
Chief Financial Officer**

*Officer Since 1996
MAAS Member Since 1993*

**Chris Bennett
Equipment Manager**

*Officer Since 2016
MAAS Member Since 2011*

**Patrick Smith
Fleet Maintenance**

*Officer Since 2016
MAAS Member Since 2004*

**Patrick Duve
Base Maintenance**

*Officer Since 2007
MAAS Member Since 2006*

SERVICE AREA

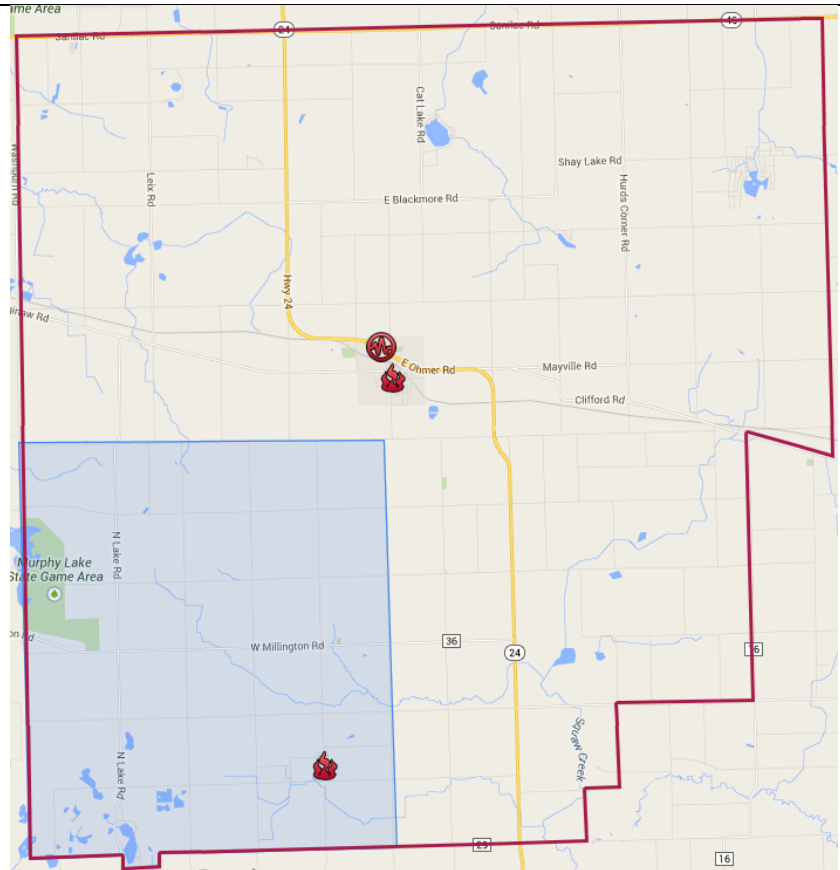


MAAS is contracted to provide services to the residents and visitors of the Village of Mayville, Fremont Township, Dayton Township, and Rich Township,

Additionally, MAAS provides services to Watertown Township.

Service Area = 134 square miles

Population = 8,530*



*Based on the 2010 Census

OUR EQUIPMENT



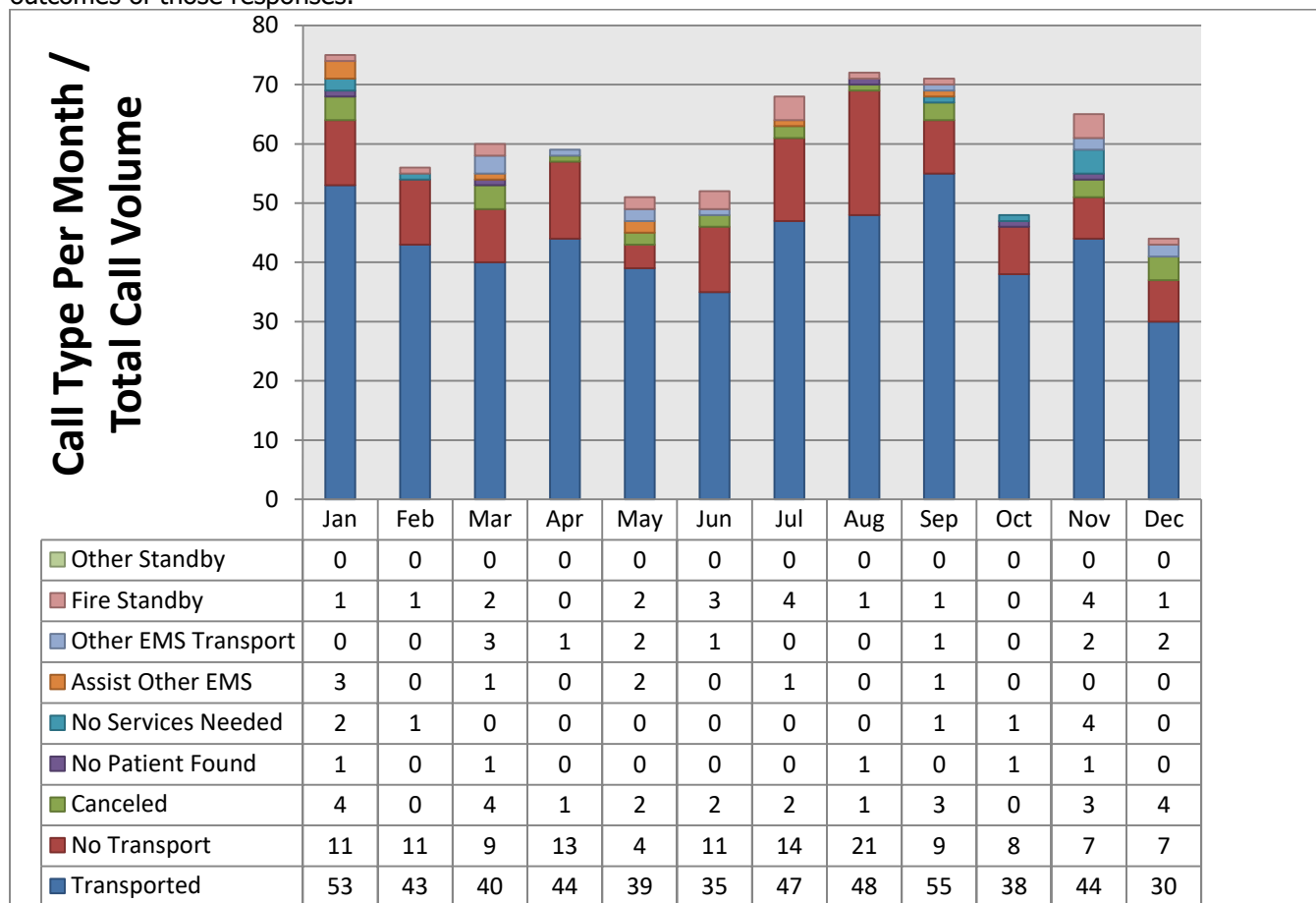
MAAS operates two ambulances from our base located at the corner of Ohmer Road (M-24) and Lynch Drive, in Mayville. At least one ambulance and crew is on duty 24 hours a day, 7 days a week – ready to respond to any emergency. Each ambulance, along with all of the equipment, is worth approximately \$250,000. In 2019 the primary ambulance was replaced with a brand new unit.

	Primary Ambulance	Backup Ambulance
Call Sign	79-95	79-94
In Service Since	November 2019	June 2014
License Level	Basic Life Support (BLS)	Basic Life Support (BLS)
Make and Model	2019 Ford/Road Rescue Type III Ambulance	2014 Chevy/WheeledCoach Type III Ambulance
AED Equipped	Yes	Yes
Standard Equipment	Stryker® Power Cot, trauma kit, airway kit, multiple splints, multiple bandaging supplies, backboards, oxygen, burn sheets, and much more	Cot, trauma kit, airway kit, multiple splints, multiple bandaging supplies, backboards, oxygen, burn sheets, and much more
Specialized Equipment	Thumper®, CO Detector, Stair Chair, Landing Zone marking kit, Rescue Discs PFD, extrication gloves and helmets	CO Detector, Stair Chair, Landing Zone marking kit, Stokes basket, Rescue Discs PFD, extrication gloves and helmets

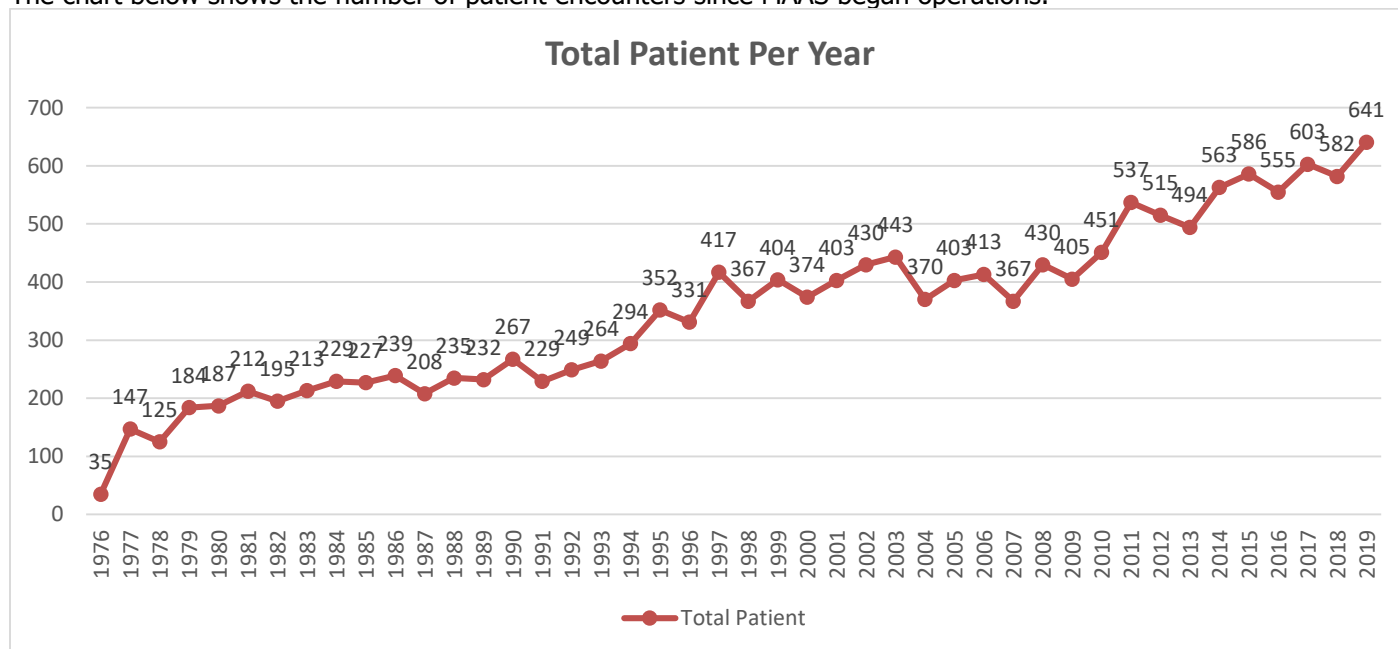
2019 OPERATIONS



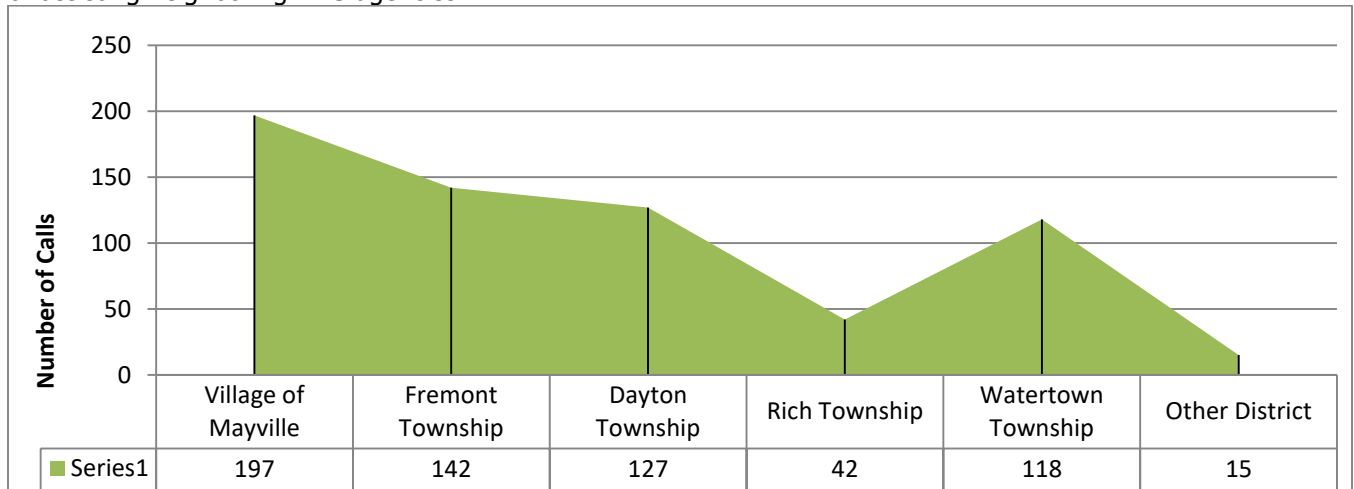
MAAS call volume continues to grow. For 2019, our staff logged **20,291.25 on call hours**. We were dispatched a total of **721** times, **up** 12.3% from 2018 (642). Of those 721 service requests, MAAS had contact with **641** patients, **up** 10.1% from 2018 (582). The chart below shows the breakdown, by month of the outcomes of those responses.



The chart below shows the number of patient encounters since MAAS began operations.



Of the 641 patient encounters in 2019, **97%** of them originated in our designated service area. Of the remaining 3% that originated outside of our service area, 5 were non-emergency transfers; the other 10 were covering for or assisting neighboring EMS agencies.



Additional Information about 2019 Operations

The following charts provide additional information and data relating to the services and patients encountered during 2019.

Patient Demographics

Age	# of Runs	% of Runs
Not Reported	24	3.74%
< 1	4	0.62%
1-9	10	1.56%
10-19	26	4.06%
20 - 29	39	6.08%
30 - 39	48	7.49%
40 - 49	46	7.18%
50 - 59	59	9.20%
60 - 69	103	16.07%
70 - 79	153	23.87%
80 - 89	97	15.13%
90 - 99	32	4.99%
Total	641	100%

Gender	# of Patients	% of Runs
Male	313	48.8%
Female	328	51.2%
Total	641	100%

Call Type As Dispatched

Primary Symptom	# of Runs	% of Runs
Falls	102	15.9%
Breathing Problem	87	13.6%
Sick Person	61	9.5%
Chest Pain (Non-Traumatic)	58	9.0%
MVC / Transportation Incident	47	7.3%
Abdominal Pain / Problems	45	7.0%
Other	38	5.9%
Psychiatric / Behavioral / Suicide Attempt	30	4.7%
Seizure	21	3.3%
Stroke / CVA / TIA	21	3.3%
Interfacility Transfer / Medical Transport	16	2.5%
Unconscious / Syncope / Near-Syncopal	16	2.5%
Traumatic Injury	15	2.3%
Back Pain (Non-Traumatic)	13	2.0%
Diabetic Problem	12	1.9%
Hemorrhage / Laceration	8	1.2%
Cardiac Arrest / Death	7	1.1%
Assault	6	0.9%
Allergic Reaction / Stings	4	0.6%
Burns / Explosion	4	0.6%
Choking	4	0.6%
Fire / Fire Standby	4	0.6%
Headache	4	0.6%
Heart Problems / AICD	4	0.6%
Overdose / Poisoning	4	0.6%
Unknown Problem / Person Down	3	0.5%
Well Person Check	3	0.5%
Carbon Monoxide / Hazmat / Inhalation	1	0.2%
Healthcare Professional / Admission	1	0.2%
Medical Alarm	1	0.2%
Stab / Gunshot / Penetrating Trauma	1	0.2%
Total	641	100%

Patient Destinations

Destination	# of Runs	% of Runs
MCLAREN LAPEER REGION	254	39.63%
Not Applicable	122	19.03%
COVENANT MEDICAL CENTER - COOPER	68	10.61%
CARO COMMUNITY HOSPITAL	56	8.74%
MARLETTE REGIONAL HOSPITAL	46	7.18%
SAINT MARY'S OF MICHIGAN MEDICAL CENTER	40	6.24%
GENESYS REGIONAL MEDICAL CENTER - HEALTH PARK	13	2.03%
HILLS & DALES GENERAL HOSPITAL	13	2.03%
Other	13	2.03%
HURLEY MEDICAL CENTER	7	1.09%
FISHER SENIOR CARE AND REHAB	3	0.47%
MCLAREN BAY REGION	2	0.31%
MCLAREN PORT HURON	2	0.31%
COVENANT MEDICAL CENTER - HARRISON	1	0.16%
Hospital, Other	1	0.16%
MCLAREN LAPEER REGION	254	39.63%
Total	641	100%

EMS STRONG

STRONGER TOGETHER

As a volunteer paid on call community service agency, we are always looking for great people to join our team. Training assistance and reimbursement is provided, as well as many other benefits.

If you or someone you know is looking for a way to serve their community, please have them contact us.

For additional information regarding the Mayville Area Ambulance Service, please contact our office.

